

# Manual bypass Daker DK

3 109 53

## TABLE OF CONTENTS Page

1. General features.....	1
2. Functional diagram.....	1
3. Technical features .....	1



### 1. GENERAL FEATURES

The manual maintenance bypass for Daker DK allows you to remove the UPS from its original installation without interrupting the power supply to the load, making it possible to carry out manoeuvres that need to be performed with the UPS switched off:

- Maintenance
- Battery replacement
- Uptime expansion
- Checking faults

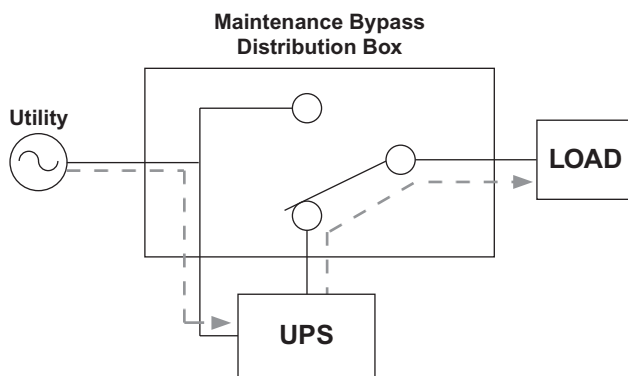
Using the relative brackets it can be mounted to the back of Daker DK UPSs on Tower configurations and installations inside Rack cabinets.

Using the cables provided, the Daker DK manual bypass is easy to connect to IEC inputs and outputs on the UPS.

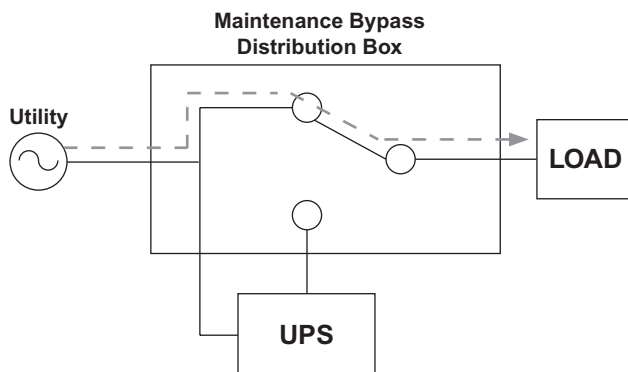
The Daker DK Manual Bypass can only be used with Daker DK 1000, 2000 and 3000VA models.

### 2. FUNCTIONAL DIAGRAM

UPS mode



MAINS mode



### 3. TECHNICAL FEATURES

General Features	
Transfer Time	4 ms
Measurements H x L x D (mm)	440x88 (2U) x77
Net Weight (kg)	3.5

Environmental conditions	
Operating temperature (°C)	0 ÷ 40 °C
Degree of protection	IP21
Relative humidity (%)	20÷80 % non-condensing